

B-936

1998 CBE-200-100-125



GENERAL DESIGN

STANDARDS & CERTIFICATIONS



ASME Section I



National Board
Registered



NFPA-85 Build
Standard



Hartford Steam
Boiler Inspected

MANUFACTURER (OEM)	Cleaver-Brooks
YEAR	1998
SERIAL NO.	L-98520
NATIONAL BOARD NO.	3676
CRN NO.	-
MODEL	CBE-200-100-125
TYPE	Scotch
DESIGN	Three Pass Dryback Firetube
MOUNTING	Legs & Skid-Mounted
INTERNAL	Straight Furnace & Tubes



CAPACITIES & INPUTS

OUTPUT CAPACITY	3,450 LB/HR
HORSEPOWER	100 BHP
DESIGN PRESSURE (MAWP)	125 PSIG
OPERATING RANGE	0 - 250 °F
HEATING SURFACE	500 ft ²
MAX. FUEL INPUT	NG: 4,185,000 BTU/HR #2: 30 GAL/HR
STANDARD FUELS ¹	Natural Gas & #2 Fuel Oil
ADDITIONAL FUELS ²	
INPUT GAS PRESSURE	MAX: 6.7 " WC MIN: 1.7 " WC
TURNDOWN RATIOS	NG: 1.85:1 #2: 1.85:1
EMISSION RATING (NOX)	Uncontrolled

¹ Standard Fuels: Boiler comes ready to burn these fuels including fuel train, safety devices, integral wiring and delivery systems.

² Additional Fuels: Boiler is capable of running on these fuels but requires modifications to the burner, fuel delivery systems and wiring, at additional cost.



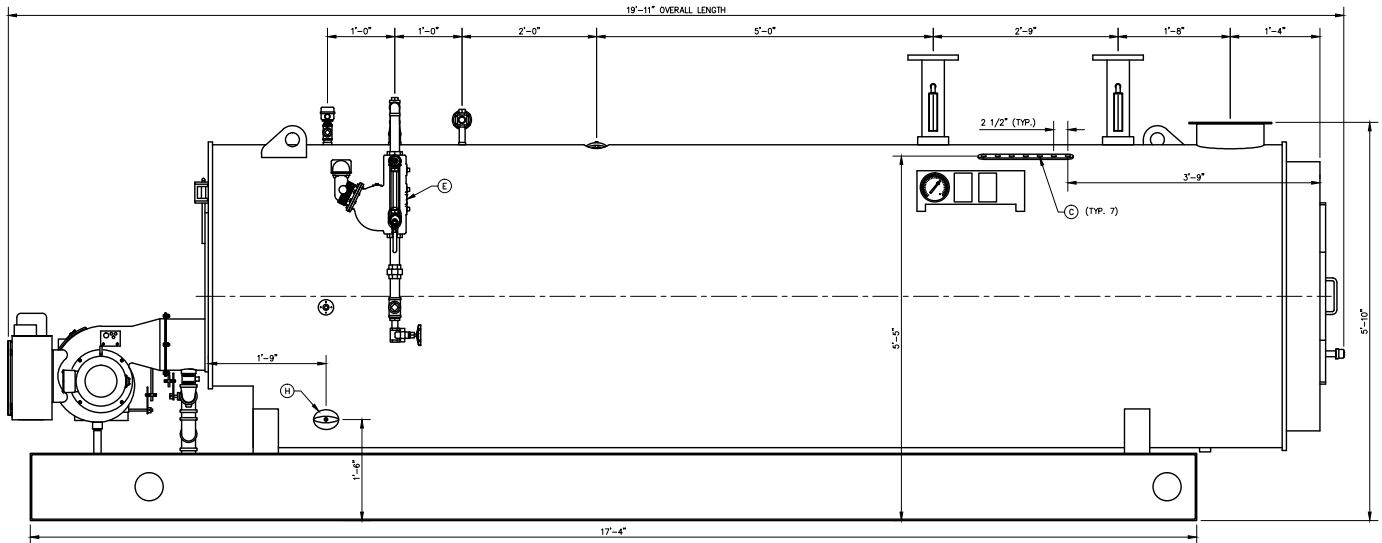
BURNER AND ELECTRICAL

BURNER MANUFACTURER (OEM)	Cleaver-Brooks
MODEL	ProFire
TYPE	Full Modulation
FLUE GAS RECIRCULATION (FGR)	No
ELECTRIC	480V/3Ph/60Hz
ATOMIZATION	Pressure
CONTROL TYPE	Single-Point Positioning
BOILER CONTROL SYSTEM	-
BURNER MANAGEMENT SYSTEM	CB110
FLAME SAFEGUARD	UV Scanner
BLOW MOTOR	2 HP
BURNER INSTALLED	Yes
PILOT TYPE	Natural Gas
INSTRUMENT AIR	-
AIR COMPRESSOR	-



DIMENSIONS AND WEIGHTS

OVERALL LENGTH	19' 11"
OVERALL HEIGHT	6' 11"
OVERALL WIDTH	5' 11"
SHIPPING WEIGHT	9,820 LBS
OPERATING WEIGHT	17,275 LBS
BOILER OUTLET	4" 300# HWS & HWR
EXHAUST OUTLET	12" \varnothing OD





POWERHOUSE DOES NOT MAKE ANY REPRESENTATIONS, WARRANTIES OR GUARANTEES, EXPRESS OR IMPLIED WITH THIS BOILER SPECIFICATION SHEET. THE CONTAINED INFORMATION IS PROPRIETARY TO POWERHOUSE AND NO OWNERSHIP RIGHTS ARE HEREBY TRANSFERRED. NO PART OF THE SHEET SHALL BE USED, REPRODUCED, TRANSLATED, CONVERTED, ADAPTED, STORED IN A RETRIEVAL SYSTEM, COMMUNICATED OR TRANSMITTED BY ANY MEANS, FOR ANY COMMERCIAL PURPOSE, INCLUDING WITHOUT LIMITATION, SALE, RESALE, LICENSE, RENTAL OR LEASE, WITHOUT THE PRIOR EXPRESS WRITTEN CONSENT OF POWERHOUSE. NEITHER POWERHOUSE NOR ANY OF ITS DIRECTORS, OFFICERS, EMPLOYEES OR AGENTS SHALL BE LIABLE BASED ON CONTRACT, WARRANTY, STRICT LIABILITY OR NEGLIGENCE, PATENT INFRINGEMENT, TORT OR IN ANY OTHER MANNER WHATSOEVER TO ANY PERSON FOR ANY LOSS, DAMAGE, INJURY, LIABILITY, COST OR EXPENSE OF ANY NATURE, INCLUDING WITHOUT LIMITATION INCIDENTAL, SPECIAL, INDIRECT, DIRECT, LIQUIDATED, EXEMPLARY, PUNITIVE OR CONSEQUENTIAL DAMAGES ARISING OUT OF OR IN CONNECTION WITH THE USE OF THE SPECIFICATION SHEET.

PLEASE CONTACT POWERHOUSE AT 856-764-3333 OR 1-800-37-STEAM FOR ENGINEERED DRAWINGS AND COMPLETE O&M MANUALS.