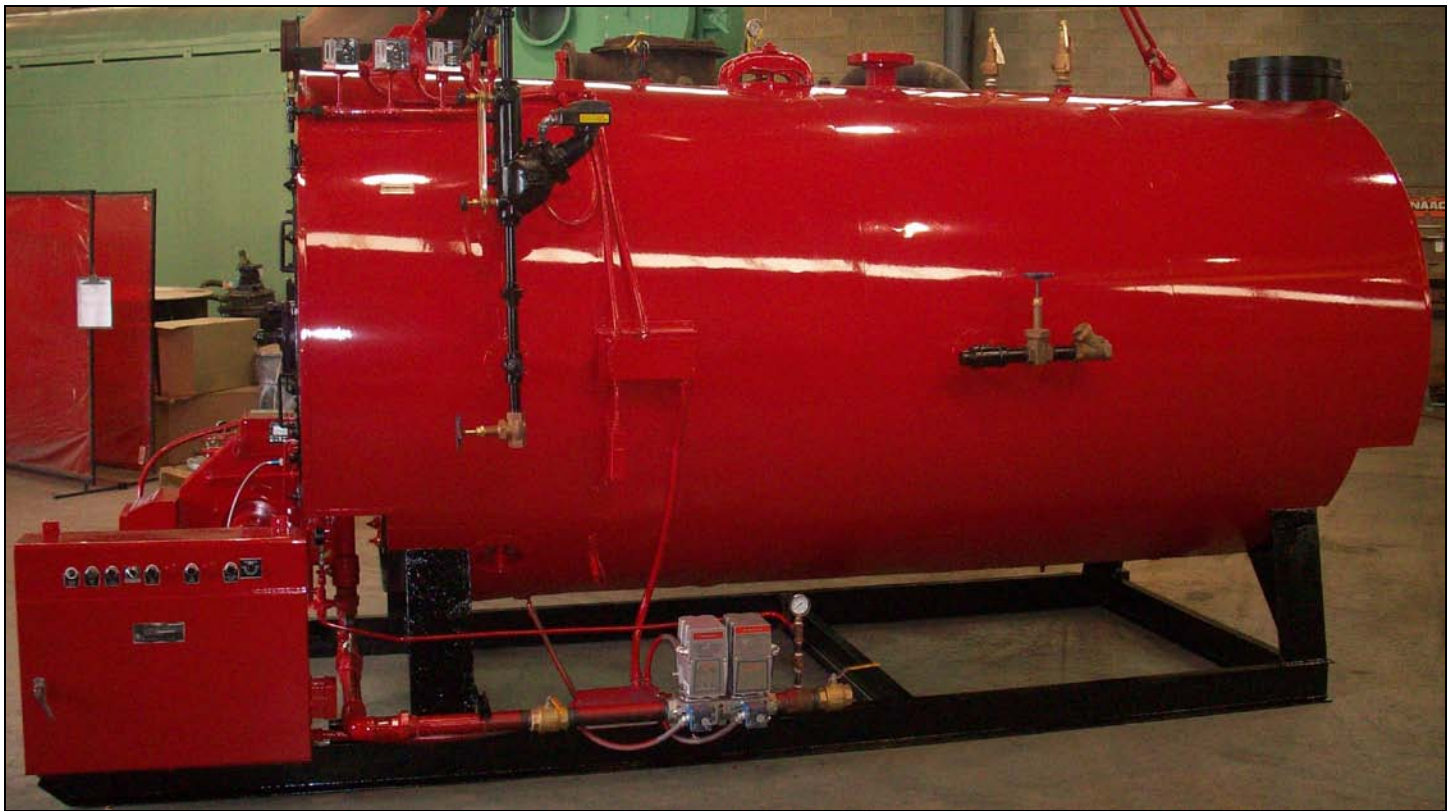




## Unit No. B-856: 150 HP, 150 PSIG D.P., Natural Gas



**Industrial Boiler Company Packaged Firetube Boiler; model IRP-3WB-Gas**, constructed in 1986 in accordance with the ASME Code for a design pressure of 150 PSIG. Unit is a three-pass wetback design with 750 square feet of fireside heating surface. The shell is insulated with two inches of compressed fiberglass and covered with a heavy gauge sheet steel casing. The fully modulating forced draft burner is integrally mounted, piped and wired on the boiler front allowing for ease of flame observation, set-up and maintenance. Valving trim, controls and ancillary equipment include;

- **Gordon-Piatt** forced draft burner, model S12.1G50
- **Primary low water cut-off** and feed pump control; McD&M No. 157A
- **Secondary low water cut-off**; Warrick probe type with manual reset
- **Boiler valve trim** including; feedwater stop and check valving, blowdown, blow-off and vent valves and safety relief valves per ASME Code
- **Water column** with sight glass, gauge cocks, and blowdown/drain valve, mounted on the primary low water cut-off.
- **Front and rear hinged covers** allowing total access to furnace and tubes.
- **Pressure gauge** with isolation valve
- **Boiler/Burner control center** consisting of a primary flame control and detector, motor starters, relays, fuse blocks, limit switches, alarm bell, indicating lights, control circuit transformer, potentiometer with selector switch for manual/automatic firing rate adjustment.
- **Automatic fuel safety shut-off valves**
- **Steam pressure limit switches**; operating pressure limit, safety limit with manual reset and modulating pressure controller
- **Stack Thermometer**
- **CSD-1 safety code** requirements,
- **FM Insurance** approvals, U.L. Labeling
- **National Board Certified**

**Connections:**

Steam Outlet- 4" x 300#	Blowdown- 1.25" NPT	Natural Gas - 2.0" NPT	Exhaust - 16" Dia. (nominal)
Feedwater - 1.25" NPT	Blow-off - 1.0" NPT	#2 Oil, S & R - N/A	Electric - 480v/3/60

**Dimensions:** 16' 08" OAL x 7' 08" OAW x 7' 08" OAH. **Weights:** Shipping – 15,000 Lbs, Operating – 22,000 Lbs

***This unit is offered fully reconditioned, shop tested and factory painted with a one-year parts warranty, subject to prior sale or rental.***